

Year: 2006
 Female Parent:
 Male Parent:

Flower (1=white, 3=purple, 5=blue) 5
 Vine Size (1=small to 5=large): 4
 Maturity (1=early to 5=late): 4

Skin Color: Medium purple
 Flesh Color: Mottled purple center, mottled very light purple vascular
 Tuber Shape: Oblong

	Hermiston	Corvallis	K Falls	Malheur	Aberdeen
Yield Total (cwt):	343	396	302	532	229
Yield No. 1's:	183	174	103	275	76
+ 10 (12 hm) oz. (cwt):	2	38	2	33	0
4-10 (12 hm) oz. (cwt):	181	136	101	242	
Yield Under 4 oz (cwt):	140	21	155	215	184
Yield Culls (cwt):	19	201	45	0	
Average Tuber Size (oz):	3.7	4.4			
Length/Width Ratio:	1.70				
Specific Gravity:	1.067	1.085	1.078		1.071
Hollow Heart (%):	0	0	0		0
Brown Center (%):	0				
Black Spot (%):	0				
IBS (%):	0		0		
Vascular Discoloration (%):	0	0	0		
Stem End Discoloration (%)		1	0		
Russetting (1-5):	1.9		4.6		
Shape Uniformity (1-5):	4.0		2.9		
Eye Depth (1-5):	3.4		2.3		
Greening (1-5):		5.0	5.0		
Growth Cracks (1-5):	5.0	5.0	4.7		5.0
Scab (1-5):	5.0				4.8
Shatter Bruise (1-5):	4.8		5.0		
Knobs (1-5)		3.0	4.8		4.3

Remarks:

Hermiston: EH, fleshint=4, vis1=1.3, vis2=2

Corvallis:

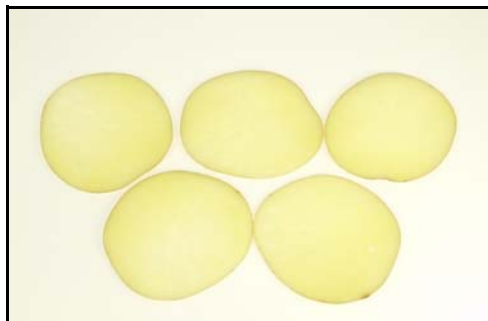
K. Falls: rough, pear x 3, keep

Malheur: d4,dk purple 2, curved, pointed, irreg4, allig, rough 2, grcrk, knobs, db, bn

Aberdeen: Merit Score=2.5, Baked=4.9, Microwaved=4.5, Boiled=4.0, Antioxidant=390

P. Butte:

Footnotes: Hermiston fleshint=flesh color intensity (1 to 5=most intense), vis1=external eye appeal by Dan (1 to 5=best), vis2=external and internal eye appeal by grading crew (1 to 5=best); Aberdeen Merit Score (1 to 5=exceptionally good), cooking score (1 to 9=best), antioxidant score (higher best)



Year: 2006
 Female Parent: Norgleam
 Male Parent: W5279-4

Flower (1=white, 3=purple, 5=blue) 3.3
 Vine Size (1=small to 5=large): 2.5
 Maturity (1=early to 5=late): 1.5

Skin Color: Yellow
 Flesh Color: Light yellow
 Tuber Shape: Slightly oblong

	Hermiston	Corvallis	K Falls	Malheur	Aberdeen
Yield Total (cwt):	434	393	361	467	297
Yield No. 1's:	392	285	299	421	264
+ 10 (12 hm) oz. (cwt):	201	178	172	225	106
4-10 (12 hm) oz. (cwt):	191	107	127	196	
Yield Under 4 oz (cwt):	20	5	17	28	68
Yield Culls (cwt):	23	103	45	1	
Average Tuber Size (oz):	8.1	9.2			
Length/Width Ratio:	1.33				
Specific Gravity:	1.070	1.090	1.082		1.080
Hollow Heart (%):	0	12	18		0
Brown Center (%):	0				
Black Spot (%):	0				
IBS (%):	0		18		
Vascular Discoloration (%):	0	2	0		
Stem End Discoloration (%):		0	30		
Russetting (1-5):	1.0		2.1		
Shape Uniformity (1-5):	4.3		2.5		
Eye Depth (1-5):	5.0		2.7		
Greening (1-5):		3.0	5.0		
Growth Cracks (1-5):	4.6	3.0	4.5		5.0
Scab (1-5):	5.0				1.3
Shatter Bruise (1-5):	4.8		5.0		
Knobs (1-5)		3.0	5.0		5.0

Remarks:

Hermiston: very smooth(2), fleshint=2, vis1=3.8, vis2=5

Corvallis:

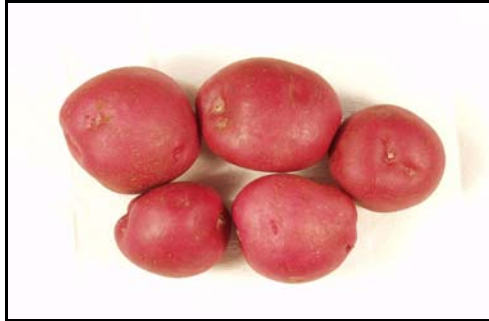
K. Falls: flat x 2, poor shape, fair

Malheur: d4,yell 4,rnd 3,round to oval,big,died early, deep scab2, ugly skin, irreg2, fbe2

Aberdeen: Merit Score=3.3, Baked=4.0, Microwaved=5.4, Boiled=6.0, Antioxidant=260

P. Butte: beautiful tubers

Footnotes: Hermiston fleshint=flesh color intensity (1 to 5=most intense), vis1=external eye appeal by Dan (1 to 5=best), vis2=external and internal eye appeal by grading crew (1 to 5=best); Aberdeen Merit Score (1 to 5=exceptionally good), cooking score (1 to 9=best), antioxidant score (higher best)



Year: 2006
 Female Parent: Fontenot
 Male Parent: 3261-5R
 Skin Color: Red
 Flesh Color: Red with white center
 Tuber Shape: Round

Flower (1=white, 3=purple, 5=blue) 3.5
 Vine Size (1=small to 5=large): 2
 Maturity (1=early to 5=late): 2

	Hermiston	Corvallis	K Falls	Malheur	Aberdeen
Yield Total (cwt):	376	396	364	598	302
Yield No. 1's:	216	272	128	424	159
+ 10 (12 hm) oz. (cwt):	0	16	1	11	20
4-10 (12 hm) oz. (cwt):	216	256	126	413	
Yield Under 4 oz (cwt):	157	15	196	171	233
Yield Culls (cwt):	3	109	40	2	
Average Tuber Size (oz):	2.5	4.1			
Length/Width Ratio:	1.00				
Specific Gravity:	1.071	1.090	1.082		1.081
Hollow Heart (%):	0	0	0		0
Brown Center (%):	0				
Black Spot (%):	0				
IBS (%):	0		6		
Vascular Discoloration (%):	0	3	0		
Stem End Discoloration (%):		0	0		
Russetting (1-5):	1.5		4.4		
Shape Uniformity (1-5):	5.0		3.1		
Eye Depth (1-5):	4.0		2.4		
Greening (1-5):		5.0	5.0		
Growth Cracks (1-5):	5.0	4.0	4.8		5.0
Scab (1-5):	4.9				3.5
Shatter Bruise (1-5):	4.3		5.0		
Knobs (1-5)		4.0	5.0		5.0

Remarks:

Hermiston: many attached stems(3), fleshint=2, vis1=3, vis2=4

Corvallis:

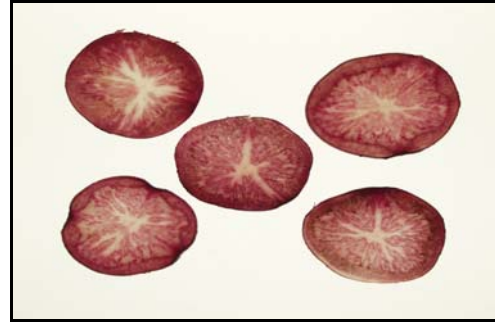
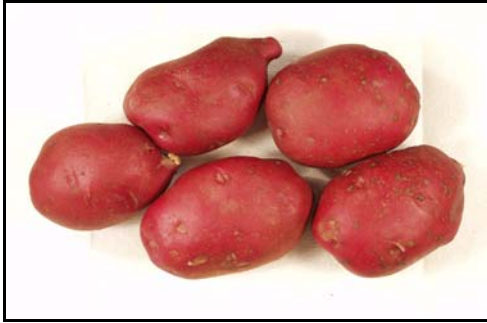
K. Falls: RKN x 3, pty, keep x 2

Malheur: d, k 3, rose red, pink-red 2, irregular 2, round to oblong, dumbell, fbe

Aberdeen: Merit Score=4, Baked=4.8, Microwaved=5.3, Boiled=4.0, Antioxidant=429

P. Butte:

Footnotes: Hermiston fleshint=flesh color intensity (1 to 5=most intense), vis1=external eye appeal by Dan (1 to 5=best), vis2=external and internal eye appeal by grading crew (1 to 5=best); Aberdeen Merit Score (1 to 5=exceptionally good), cooking score (1 to 9=best), antioxidant score (higher best)



Year: 2006
 Female Parent: NDOP5847-1
 Male Parent: Kanona

Flower (1=white, 3=purple, 5=blue) 3
 Vine Size (1=small to 5=large): 4.5
 Maturity (1=early to 5=late): 4.5

Skin Color: Red
 Flesh Color: Burgundy with center white star
 Tuber Shape: Oblong

	Hermiston	Corvallis	K Falls	Malheur	Aberdeen
Yield Total (cwt):	381	473	316	640	332
Yield No. 1's:	296	392	144	580	234
+ 10 (12 hm) oz. (cwt):	89	117	48	169	91
4-10 (12 hm) oz. (cwt):	208	274	96	411	
Yield Under 4 oz (cwt):	49	6	49	53	83
Yield Culls (cwt):	36	76	124	2	
Average Tuber Size (oz):	6.0	6.1			
Length/Width Ratio:	1.32				
Specific Gravity:	1.064	1.098	1.082		1.072
Hollow Heart (%):	0	3	2		0
Brown Center (%):	0				
Black Spot (%):	0				
IBS (%):	0		4		
Vascular Discoloration (%):	0	13	0		
Stem End Discoloration (%)		6	0		
Russetting (1-5):	1.4		4.1		
Shape Uniformity (1-5):	4.5		2.3		
Eye Depth (1-5):	4.3		2.5		
Greening (1-5):		5.0	5.0		
Growth Cracks (1-5):	4.9	4.0	3.8		2.3
Scab (1-5):	5.0				5.0
Shatter Bruise (1-5):	4.3		5.0		
Knobs (1-5)		4.0	4.9		4.8

Remarks:

Hermiston: pear, lots attached stems(2), fleshint=2, vis1=1, vis2=2.3

Corvallis:

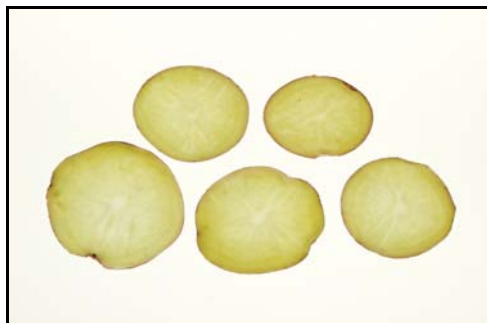
K. Falls: RKN x 4, GC x 3, pty x 3, ugly

Malheur: d 3,k,rose red 2, dark red,purple-red,rnd 2,rough skin 2, allig 3, sticky stolons

Aberdeen: Merit Score=3

P. Butte:

Footnotes: Hermiston fleshint=flesh color intensity (1 to 5=most intense), vis1=external eye appeal by Dan (1 to 5=best), vis2=external and internal eye appeal by grading crew (1 to 5=best); Aberdeen Merit Score (1 to 5=exceptionally good), cooking score (1 to 9=best), antioxidant score (higher best)



Year: 2006
 Female Parent: Granola
 Male Parent: NDOP5847-1

Flower (1=white, 3=purple, 5=blue)
 Vine Size (1=small to 5=large): 3.5
 Maturity (1=early to 5=late): 4

Skin Color: Yellow with red swirl
 Flesh Color: Deep yellow
 Tuber Shape: Oblong

	Hermiston	Corvallis	K Falls	Malheur	Aberdeen
Yield Total (cwt):	408	393	302	407	195
Yield No. 1's:	285	261	46	320	96
+ 10 (12 hm) oz. (cwt):	16	12	3	89	8
4-10 (12 hm) oz. (cwt):	269	249	44	231	
Yield Under 4 oz (cwt):	116	14	19	69	104
Yield Culls (cwt):	7	118	236	0	
Average Tuber Size (oz):	4.4	6.2			
Length/Width Ratio:	1.29				
Specific Gravity:	1.062	1.076	1.073		1.075
Hollow Heart (%):	0	10	0		1
Brown Center (%):	0				
Black Spot (%):	0				
IBS (%):	0		4		
Vascular Discoloration (%):	0	0	4		
Stem End Discoloration (%)		0	0		
Russetting (1-5):	1.0		2.5		
Shape Uniformity (1-5):	5.0		1.3		
Eye Depth (1-5):	3.8		2.3		
Greening (1-5):		5.0	5.0		
Growth Cracks (1-5):	4.8	2.0	1.7		3.8
Scab (1-5):	5.0				4.5
Shatter Bruise (1-5):	5.0		5.0		
Knobs (1-5)		4.0	2.2		4.0

Remarks:

Hermiston: fleshint=2.3, vis1=4, vis2=3.3

Corvallis:

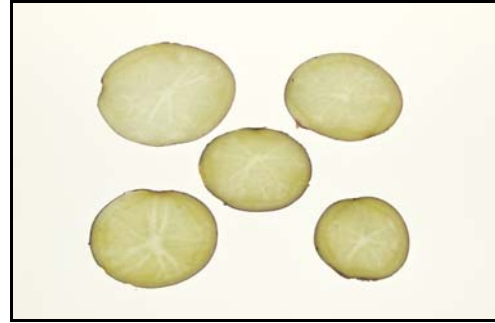
K. Falls: GC x 4, pty x 3, junk x 4

Malheur: d2,k 2,yell-pink 4,rnd to oval, fbe, irreg size, stolons-but not sticky, they break

Aberdeen: Merit Score=2.8

P. Butte:

Footnotes: Hermiston fleshint=flesh color intensity (1 to 5=most intense), vis1=external eye appeal by Dan (1 to 5=best), vis2=external and internal eye appeal by grading crew (1 to 5=best); Aberdeen Merit Score (1 to 5=exceptionally good), cooking score (1 to 9=best), antioxidant score (higher best)



Year: 2006
 Female Parent: Serrana
 Male Parent: Red flesh bulk pollen
 Skin Color: Pale purple
 Flesh Color: Yellow
 Tuber Shape: Round to oblong

Flower (1=white, 3=purple, 5=blue) 5
 Vine Size (1=small to 5=large): 4
 Maturity (1=early to 5=late): 4

	Hermiston	Corvallis	K Falls	Malheur	Aberdeen
Yield Total (cwt):	569	450	314	684	248
Yield No. 1's:	327	335	109	515	164
+ 10 (12 hm) oz. (cwt):	21	78	11	76	19
4-10 (12 hm) oz. (cwt):	306	257	98	439	
Yield Under 4 oz (cwt):	151	9	76	158	124
Yield Culls (cwt):	91	106	129	1	
Average Tuber Size (oz):	4.6	5.4			
Length/Width Ratio:	1.47				
Specific Gravity:	1.073	1.102	1.085		1.073
Hollow Heart (%):	0	3	0		0
Brown Center (%):	0				
Black Spot (%):	0				
IBS (%):	0		4		
Vascular Discoloration (%):	0	0	0		
Stem End Discoloration (%):		0	0		
Russetting (1-5):	1.4		4.2		
Shape Uniformity (1-5):	4.3		2.8		
Eye Depth (1-5):	4.0		2.5		
Greening (1-5):		5.0	5.0		
Growth Cracks (1-5):	4.4	4.0	4.4		4.3
Scab (1-5):	4.9				5.0
Shatter Bruise (1-5):	5.0		5.0		
Knobs (1-5)		4.0	4.7		5.0
Remarks:	Hermiston: pear(3), fleshint=1.1, vis1=1, vis2=3.5				
	Corvallis:				
	K. Falls: RKN x 5, pty x 3, pear x 3				
	Malheur: k4, lavender 3, blue-purple-violet, rough, nice, knobs				
	Aberdeen: Merit Score=3				
	P. Butte:				

Footnotes: Hermiston fleshint=flesh color intensity (1 to 5=most intense), vis1=external eye appeal by Dan (1 to 5=best), vis2=external and internal eye appeal by grading crew (1 to 5=best); Aberdeen Merit Score (1 to 5=exceptionally good), cooking score (1 to 9=best), antioxidant score (higher best)



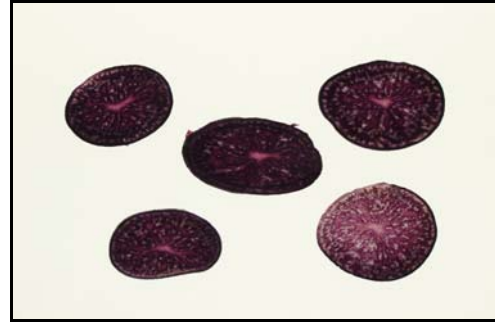
Year: 2006
 Female Parent: All Blue
 Male Parent: PA97B29-4

Flower (1=white, 3=purple, 5=blue) 3.5
 Vine Size (1=small to 5=large): 4
 Maturity (1=early to 5=late): 2.5

Skin Color: Dark purple
 Flesh Color: Mottled purple with white center
 Tuber Shape: Round to oblong

	Hermiston	Corvallis	K Falls	Malheur	Aberdeen
Yield Total (cwt):	595	434	355	747	395
Yield No. 1's:	387	309	117	504	195
+ 10 (12 hm) oz. (cwt):	27	32	4	65	16
4-10 (12 hm) oz. (cwt):	360	276	113	438	
Yield Under 4 oz (cwt):	173	13	177	214	312
Yield Culls (cwt):	35	112	61	1	
Average Tuber Size (oz):	4.3	4.6			
Length/Width Ratio:	1.22				
Specific Gravity:	1.075	1.089	1.090		1.080
Hollow Heart (%):	0	1	0		0
Brown Center (%):	0				
Black Spot (%):	0				
IBS (%):	0		0		
Vascular Discoloration (%):	0	1	0		
Stem End Discoloration (%):		1	0		
Russetting (1-5):	1.5		4.5		
Shape Uniformity (1-5):	4.5		2.8		
Eye Depth (1-5):	4.0		2.2		
Greening (1-5):		5.0	5.0		
Growth Cracks (1-5):	5.0	5.0	5.0		5.0
Scab (1-5):	5.0				3.3
Shatter Bruise (1-5):	3.5		5.0		
Knobs (1-5)		4.0	4.9		5.0
Remarks:	Hermiston: little SR, fleshint=3.3, vis1=2.5, vis2=3.3				
	Corvallis:				
	K. Falls: keep x 2, small rnd				
	Malheur: d,k3, dk purple 3, irreg 2, irreg sz/shp, knobs 2, chain, shat br, fbe, deep scab				
	Aberdeen: Merit Score=3.8				
	P. Butte: nice skin				

Footnotes: Hermiston fleshint=flesh color intensity (1 to 5=most intense), vis1=external eye appeal by Dan (1 to 5=best), vis2=external and internal eye appeal by grading crew (1 to 5=best); Aberdeen Merit Score (1 to 5=exceptionally good), cooking score (1 to 9=best), antioxidant score (higher best)



Year: 2006
 Female Parent: All Blue
 Male Parent: PA97B29-4
 Skin Color: Dark purple
 Flesh Color: Dark purple slightly mottled
 Tuber Shape: Long to very long

Flower (1=white, 3=purple, 5=blue) 3.3
 Vine Size (1=small to 5=large): 4
 Maturity (1=early to 5=late): 4

	Hermiston	Corvallis	K Falls	Malheur	Aberdeen
Yield Total (cwt):	290	291	210	343	47
Yield No. 1's:	91	38	43	126	9
+ 10 (12 hm) oz. (cwt):	0	4	0	15	0
4-10 (12 hm) oz. (cwt):	91	33	43	111	
Yield Under 4 oz (cwt):	192	77	142	213	46
Yield Culls (cwt):	8	176	25	0	
Average Tuber Size (oz):	3.1	3.0			
Length/Width Ratio:	2.10				
Specific Gravity:	1.062	1.078	1.073		1.059
Hollow Heart (%):	0	0	0		0
Brown Center (%):	0				
Black Spot (%):	0				
IBS (%):	0		0		
Vascular Discoloration (%):	0	0	0		
Stem End Discoloration (%):		0	0		
Russetting (1-5):	2.0		4.3		
Shape Uniformity (1-5):	4.8		3.2		
Eye Depth (1-5):	3.5		2.6		
Greening (1-5):		5.0	5.0		
Growth Cracks (1-5):	5.0	5.0	5.0		5.0
Scab (1-5):	5.0				5.0
Shatter Bruise (1-5):	5.0		5.0		
Knobs (1-5)		4.0	5.0		4.5

Remarks:

Hermiston: fleshint=4.5, vis1=1, vis2=4

Corvallis:

K. Falls: keep x 5

Malheur: d4,dk purple 2, purple 2, small, irreg, allig 4, bn 2, ugly 2, dumbell, rough, knobs

Aberdeen: Merit Score=1.8

P. Butte: fingerling, OK

Footnotes: Hermiston fleshint=flesh color intensity (1 to 5=most intense), vis1=external eye appeal by Dan (1 to 5=best), vis2=external and internal eye appeal by grading crew (1 to 5=best); Aberdeen Merit Score (1 to 5=exceptionally good), cooking score (1 to 9=best), antioxidant score (higher best)



Year: 2006
 Female Parent: 375335-1
 Male Parent: POR00PG2-17
 Skin Color: Dark red
 Flesh Color: Burgundy with white star
 Tuber Shape: Slightly oblong

Flower (1=white, 3=purple, 5=blue) 1
 Vine Size (1=small to 5=large): 4.5
 Maturity (1=early to 5=late): 4

	Hermiston	Corvallis	K Falls	Malheur	Aberdeen
Yield Total (cwt):	330	486	397	1029	137
Yield No. 1's:	74	316	101	537	24
+ 10 (12 hm) oz. (cwt):	0	12	6	50	0
4-10 (12 hm) oz. (cwt):	74	304	94	487	
Yield Under 4 oz (cwt):	242	24	230	476	131
Yield Culls (cwt):	15	145	67	4	
Average Tuber Size (oz):	2.4	3.7			
Length/Width Ratio:	1.18				
Specific Gravity:	1.060	1.089	1.072		1.060
Hollow Heart (%):	0	1	0		0
Brown Center (%):	0				
Black Spot (%):	0				
IBS (%):	0		0		
Vascular Discoloration (%):	0	26	0		
Stem End Discoloration (%):		0	0		
Russetting (1-5):	1.0		3.9		
Shape Uniformity (1-5):	5.0		2.9		
Eye Depth (1-5):	5.0		2.6		
Greening (1-5):		5.0	5.0		
Growth Cracks (1-5):	5.0	4.0	5.0		5.0
Scab (1-5):	4.0				5.0
Shatter Bruise (1-5):	5.0		5.0		
Knobs (1-5)		4.0	4.8		5.0

Remarks:

Hermiston: sprts(3), fleshint=3, vis1=1, vis2=2.3

Corvallis:

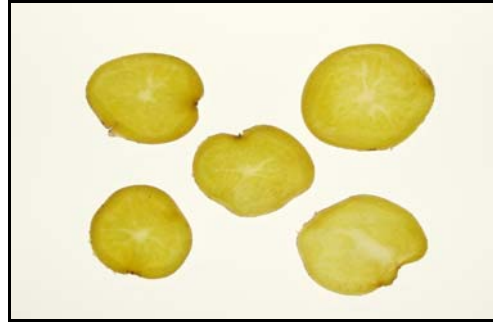
K. Falls: keep x 2, dumbbells, bottleneck

Malheur: d4,purple-red,lavender-purple,pink-red,sticky stolons 3,uniform,irreg,sprouting

Aberdeen: Merit Score=2.5

P. Butte:

Footnotes: Hermiston fleshint=flesh color intensity (1 to 5=most intense), vis1=external eye appeal by Dan (1 to 5=best), vis2=external and internal eye appeal by grading crew (1 to 5=best); Aberdeen Merit Score (1 to 5=exceptionally good), cooking score (1 to 9=best), antioxidant score (higher best)



Year: 2006
 Female Parent: 91E22
 Male Parent: Yema de Huevo
 Skin Color: Yellow with red spectacles
 Flesh Color: Dark yellow
 Tuber Shape: Round to oblong

Flower (1=white, 3=purple, 5=blue) 4
 Vine Size (1=small to 5=large): 3
 Maturity (1=early to 5=late): 3.5

	Hermiston	Corvallis	K Falls	Malheur	Aberdeen
Yield Total (cwt):	381	234	221	220	213
Yield No. 1's:	75	65	25	25	43
+ 10 (12 hm) oz. (cwt):	0	0	0	5	0
4-10 (12 hm) oz. (cwt):	75	66	25	20	
Yield Under 4 oz (cwt):	297	33	160	190	207
Yield Culls (cwt):	8	136	37	0	
Average Tuber Size (oz):	2.3	2.3			
Length/Width Ratio:	1.13				
Specific Gravity:	1.060	1.067	1.069		1.066
Hollow Heart (%):	0	0	4		0
Brown Center (%):	0				
Black Spot (%):	0				
IBS (%):	98		20		
Vascular Discoloration (%):	0	21	0		
Stem End Discoloration (%):		2	0		
Russetting (1-5):	1.0		2.1		
Shape Uniformity (1-5):	5.0		2.7		
Eye Depth (1-5):	2.0		2.2		
Greening (1-5):		5.0	4.8		
Growth Cracks (1-5):	5.0	5.0	4.9		5.0
Scab (1-5):	5.0				4.0
Shatter Bruise (1-5):	5.0		5.0		
Knobs (1-5)		4.0	4.9		5.0

Remarks:

Hermiston: fleshint=3, vis1=1, vis2=1.9

Corvallis:

K. Falls: small, rough x 4

Malheur: d4, yell-orange2, sprouts 4, new shoots, irregular, tiny 2, chains 3, rough, stolons

Aberdeen: Merit Score=3, Baked=4.8, Microwaved=5.6, Boiled=6.0, Antioxidant=368

P. Butte: small tubers

Footnotes: Hermiston fleshint=flesh color intensity (1 to 5=most intense), vis1=external eye appeal by Dan (1 to 5=best), vis2=external and internal eye appeal by grading crew (1 to 5=best); Aberdeen Merit Score (1 to 5=exceptionally good), cooking score (1 to 9=best), antioxidant score (higher best)



Year: 2006
 Female Parent: Achirana
 Male Parent: POR00PG2-17

Flower (1=white, 3=purple, 5=blue) 3.5
 Vine Size (1=small to 5=large): 5
 Maturity (1=early to 5=late): 4.5

Skin Color: Dark red
 Flesh Color: Mottled burgundy with white vascular
 Tuber Shape: Round to oblong

	Hermiston	Corvallis	K Falls	Malheur	Aberdeen
Yield Total (cwt):	651	630	468	932	376
Yield No. 1's:	533	557	316	662	309
+ 10 (12 hm) oz. (cwt):	153	357	144	299	139
4-10 (12 hm) oz. (cwt):	380	200	172	363	
Yield Under 4 oz (cwt):	100	6	62	118	80
Yield Culls (cwt):	18	68	90	1	
Average Tuber Size (oz):	5.6	9.0			
Length/Width Ratio:	1.10				
Specific Gravity:	1.066	1.092	1.080		1.066
Hollow Heart (%):	0	0	0		0
Brown Center (%):	0				
Black Spot (%):	0				
IBS (%):	0		6		
Vascular Discoloration (%):	0	0	0		
Stem End Discoloration (%):		0	0		
Russetting (1-5):	2.0		3.7		
Shape Uniformity (1-5):	4.8		2.8		
Eye Depth (1-5):	4.3		2.4		
Greening (1-5):		5.0	5.0		
Growth Cracks (1-5):	4.9	4.0	4.7		3.8
Scab (1-5):	5.0				2.5
Shatter Bruise (1-5):	4.8		5.0		
Knobs (1-5)		4.0	4.9		5.0

Remarks:

Hermiston: attached stems(2), fleshint=1.8, vis1=1.3, vis2=4

Corvallis:

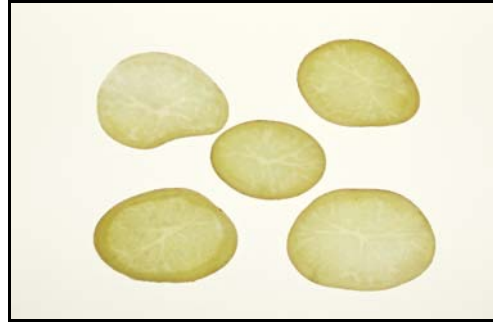
K. Falls: flat x 3, nice color x 3

Malheur: d4,yell-pink 3,yell w/ pink eyes, rough, fbe, chain 2, sticky stolons 2, flattened

Aberdeen: Merit Score=3

P. Butte: large tubers

Footnotes: Hermiston fleshint=flesh color intensity (1 to 5=most intense), vis1=external eye appeal by Dan (1 to 5=best), vis2=external and internal eye appeal by grading crew (1 to 5=best); Aberdeen Merit Score (1 to 5=exceptionally good), cooking score (1 to 9=best), antioxidant score (higher best)



Year: 2006
 Female Parent: PA99P11-2
 Male Parent: Pig420

Flower (1=white, 3=purple, 5=blue) 3.5
 Vine Size (1=small to 5=large): 2
 Maturity (1=early to 5=late): 2.5

Skin Color: Yellow with red eyes
 Flesh Color: Cream
 Tuber Shape: Round to oblong

	Hermiston	Corvallis	K Falls	Malheur	Aberdeen
Yield Total (cwt):	556	328	421	549	347
Yield No. 1's:	392	227	256	441	235
+ 10 (12 hm) oz. (cwt):	33	44	29	57	35
4-10 (12 hm) oz. (cwt):	358	184	227	384	
Yield Under 4 oz (cwt):	153	10	93	95	195
Yield Culls (cwt):	12	91	72	9	
Average Tuber Size (oz):	4.4	4.8			
Length/Width Ratio:	1.27				
Specific Gravity:	1.063	1.078	1.072		1.068
Hollow Heart (%):	0	0	2		0
Brown Center (%):	0				
Black Spot (%):	0				
IBS (%):	0		2		
Vascular Discoloration (%):	0	0	0		
Stem End Discoloration (%):		0	0		
Russetting (1-5):	1.0		2.6		
Shape Uniformity (1-5):	4.3		2.9		
Eye Depth (1-5):	4.3		2.4		
Greening (1-5):		3.0	5.0		
Growth Cracks (1-5):	5.0	5.0	4.5		5.0
Scab (1-5):	4.3				3.3
Shatter Bruise (1-5):	5.0		5.0		
Knobs (1-5)		4.0	5.0		5.0

Remarks:

Hermiston: fleshint=2, vis1=2.6, vis2=1.8

Corvallis:

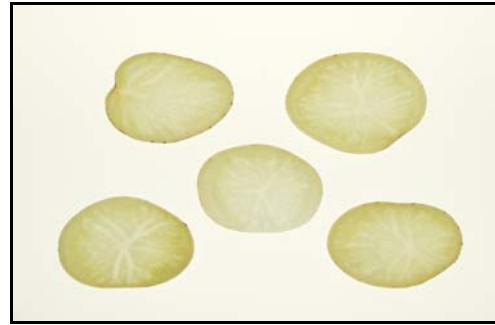
K. Falls: keep, flat x 4

Malheur: d3,k,yell w/ pink markings,orange-yellow w/ pink eyes,deep scab 2,irreg 4,rnd,fbe

Aberdeen: Merit Score=4, Baked=5.1, Microwaved=5.5, Boiled=7.0, Antioxidant=399

P. Butte: OK

Footnotes: Hermiston fleshint=flesh color intensity (1 to 5=most intense), vis1=external eye appeal by Dan (1 to 5=best), vis2=external and internal eye appeal by grading crew (1 to 5=best); Aberdeen Merit Score (1 to 5=exceptionally good), cooking score (1 to 9=best), antioxidant score (higher best)



Year: 2006
 Female Parent: PA99P11-2
 Male Parent: Pig420
 Skin Color: Yellow with red eyes
 Flesh Color: Cream
 Tuber Shape: Round to oblong

Flower (1=white, 3=purple, 5=blue) 3.8
 Vine Size (1=small to 5=large): 3.5
 Maturity (1=early to 5=late): 3

	Hermiston	Corvallis	K Falls	Malheur	Aberdeen
Yield Total (cwt):	570	449	426	720	346
Yield No. 1's:	357	333	233	560	256
+ 10 (12 hm) oz. (cwt):	23	69	30	62	42
4-10 (12 hm) oz. (cwt):	333	263	202	498	
Yield Under 4 oz (cwt):	172	9	106	121	165
Yield Culls (cwt):	41	107	87	2	
Average Tuber Size (oz):	4.3	5.3			
Length/Width Ratio:	1.31				
Specific Gravity:	1.070	1.087	1.078		1.071
Hollow Heart (%):	0	0	0		0
Brown Center (%):	0				
Black Spot (%):	0				
IBS (%):	0		10		
Vascular Discoloration (%):	0	0	0		
Stem End Discoloration (%):		1	0		
Russetting (1-5):	1.1		2.3		
Shape Uniformity (1-5):	4.5		2.7		
Eye Depth (1-5):	4.1		2.4		
Greening (1-5):		3.0	4.7		
Growth Cracks (1-5):	5.0	5.0	4.6		4.8
Scab (1-5):	4.4				3.5
Shatter Bruise (1-5):	5.0		5.0		
Knobs (1-5)		5.0	4.9		5.0

Remarks:

Hermiston: smooth, fleshint=1.8, vis1=3.4, vis2=3.3

Corvallis:

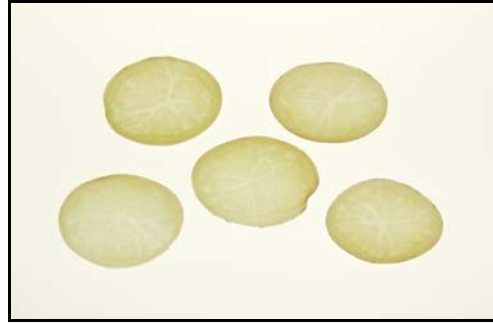
K. Falls: pty x 4, GC x 3, fair

Malheur: d4, blotchy pink on yellow 4, chain 2, sticky stolons, irreg, db, stem end decay

Aberdeen: Merit Score=4, Baked=5.6, Microwaved=6.3, Boiled=6.0, Antioxidant=414

P. Butte: low yield, fair

Footnotes: Hermiston fleshint=flesh color intensity (1 to 5=most intense), vis1=external eye appeal by Dan (1 to 5=best), vis2=external and internal eye appeal by grading crew (1 to 5=best); Aberdeen Merit Score (1 to 5=exceptionally good), cooking score (1 to 9=best), antioxidant score (higher best)



Year: 2006
 Female Parent: PA99P11-2
 Male Parent: Pig420

Flower (1=white, 3=purple, 5=blue) 3.8
 Vine Size (1=small to 5=large): 4.5
 Maturity (1=early to 5=late): 3

Skin Color: Yellow with red eyes
 Flesh Color: Cream
 Tuber Shape: Oblong

	Hermiston	Corvallis	K Falls	Malheur	Aberdeen
Yield Total (cwt):	575	487	420	941	419
Yield No. 1's:	279	290	153	481	233
+ 10 (12 hm) oz. (cwt):	0	18	8	34	9
4-10 (12 hm) oz. (cwt):	279	273	145	447	
Yield Under 4 oz (cwt):	262	22	184	364	71
Yield Culls (cwt):	33	175	83	2	
Average Tuber Size (oz):	3.2	4.1			
Length/Width Ratio:	1.27				
Specific Gravity:	1.058	1.086	1.073		1.060
Hollow Heart (%):	0	0	0		0
Brown Center (%):	0				
Black Spot (%):	0				
IBS (%):	0		6		
Vascular Discoloration (%):	0	0	0		
Stem End Discoloration (%):		1	0		
Russetting (1-5):	1.3		2.1		
Shape Uniformity (1-5):	4.8		2.6		
Eye Depth (1-5):	4.8		2.3		
Greening (1-5):		4.0	4.8		
Growth Cracks (1-5):	5.0	5.0	4.9		5.0
Scab (1-5):	4.4				3.8
Shatter Bruise (1-5):	5.0		5.0		
Knobs (1-5)		4.0	4.4		5.0

Remarks:

Hermiston: no dormancy, fleshint=1.4, vis1=3, vis2=3.1

Corvallis:

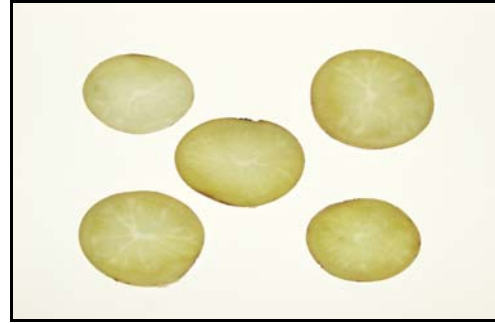
K. Falls: pty x 3, pears x 4

Malheur: d4, yellow w/ pink eyes & marks 4, chain 4, sprouts 3, sticky stolons 2, irreg 2,bn

Aberdeen: Merit Score=3.3, Baked=5.3, Microwaved=5.9, Boiled=6.0, Antioxidant=322

P. Butte: OK

Footnotes: Hermiston fleshint=flesh color intensity (1 to 5=most intense), vis1=external eye appeal by Dan (1 to 5=best), vis2=external and internal eye appeal by grading crew (1 to 5=best); Aberdeen Merit Score (1 to 5=exceptionally good), cooking score (1 to 9=best), antioxidant score (higher best)



Year: 2006
 Female Parent: PA99P11-2
 Male Parent: Pig420

Flower (1=white, 3=purple, 5=blue) 4
 Vine Size (1=small to 5=large): 4
 Maturity (1=early to 5=late): 4

Skin Color: white with red eyes
 Flesh Color: Cream
 Tuber Shape: Slightly oblong

	Hermiston	Corvallis	K Falls	Malheur	Aberdeen
Yield Total (cwt):	502	424	415	786	267
Yield No. 1's:	296	241	162	579	121
+ 10 (12 hm) oz. (cwt):	8	26	10	115	5
4-10 (12 hm) oz. (cwt):	288	215	152	464	
Yield Under 4 oz (cwt):	189	26	215	162	228
Yield Culls (cwt):	17	157	38	4	
Average Tuber Size (oz):	3.5	3.9			
Length/Width Ratio:	1.43				
Specific Gravity:	1.068	1.092	1.087		1.073
Hollow Heart (%):	0	1	2		0
Brown Center (%):	0				
Black Spot (%):	0				
IBS (%):	13		4		
Vascular Discoloration (%):	0	0	0		
Stem End Discoloration (%):		0	0		
Russetting (1-5):	1.0		2.2		
Shape Uniformity (1-5):	5.0		3.0		
Eye Depth (1-5):	4.8		2.5		
Greening (1-5):		4.0	5.0		
Growth Cracks (1-5):	5.0	5.0	4.7		5.0
Scab (1-5):	4.3				5.0
Shatter Bruise (1-5):	5.0		5.0		
Knobs (1-5)		4.0	5.0		5.0

Remarks:

Hermiston: fleshint=1.1, vis1=2.3, vis2=1

Corvallis:

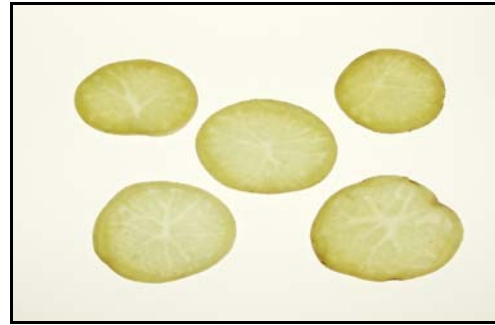
K. Falls: keeper x 3, off-shape

Malheur: d4, yellow with pink eyes 4, pear, sprouts 3, chain 3

Aberdeen: Merit Score=3

P. Butte: smooth, small, nice

Footnotes: Hermiston fleshint=flesh color intensity (1 to 5=most intense), vis1=external eye appeal by Dan (1 to 5=best), vis2=external and internal eye appeal by grading crew (1 to 5=best); Aberdeen Merit Score (1 to 5=exceptionally good), cooking score (1 to 9=best), antioxidant score (higher best)



Year: 2006
 Female Parent: PA99P35-1
 Male Parent: Rose Gold
 Skin Color: Yellow with small red eyes
 Flesh Color: Cream
 Tuber Shape: Round

Flower (1=white, 3=purple, 5=blue) 3.5
 Vine Size (1=small to 5=large): 2.5
 Maturity (1=early to 5=late): 2.5

	Hermiston	Corvallis	K Falls	Malheur	Aberdeen
Yield Total (cwt):	516	363	382	527	325
Yield No. 1's:	317	233	210	349	144
+ 10 (12 hm) oz. (cwt):	10	34	17	26	3
4-10 (12 hm) oz. (cwt):	306	198	193	323	
Yield Under 4 oz (cwt):	184	11	133	173	269
Yield Culls (cwt):	15	119	38	1	
Average Tuber Size (oz):	3.9	4.5			
Length/Width Ratio:	1.18				
Specific Gravity:	1.068	1.081	1.084		1.082
Hollow Heart (%):	0	3	6		0
Brown Center (%):	0				
Black Spot (%):	0				
IBS (%):	0		2		
Vascular Discoloration (%):	0	0	0		
Stem End Discoloration (%):		1	0		
Russetting (1-5):	1.1		2.1		
Shape Uniformity (1-5):	4.8		3.2		
Eye Depth (1-5):	4.3		3.0		
Greening (1-5):		3.0	4.5		
Growth Cracks (1-5):	5.0	5.0	5.0		5.0
Scab (1-5):	4.6				3.3
Shatter Bruise (1-5):	5.0		5.0		
Knobs (1-5)		4.0	4.8		4.8

Remarks:

Hermiston: fleshint=2.6, vis1=2.5, vis2=2

Corvallis:

K. Falls: small rnd, nice x 4

Malheur: d4, yellow with pink eyes 4, deep scab 2, irregular 2, flattened, fbe

Aberdeen: Merit Score=3.5, Baked=5.8, Microwaved=5.3, Boiled=5.0, Antioxidant=407

P. Butte: like Yukon Gold, OK

Footnotes: Hermiston fleshint=flesh color intensity (1 to 5=most intense), vis1=external eye appeal by Dan (1 to 5=best), vis2=external and internal eye appeal by grading crew (1 to 5=best); Aberdeen Merit Score (1 to 5=exceptionally good), cooking score (1 to 9=best), antioxidant score (higher best)



Year: 2006
 Female Parent: Fabula
 Male Parent: PA99P20-2

Flower (1=white, 3=purple, 5=blue) 3.5
 Vine Size (1=small to 5=large): 3
 Maturity (1=early to 5=late): 3

Skin Color: Dark purple
 Flesh Color: Purple
 Tuber Shape: Oblong to long

	Hermiston	Corvallis	K Falls	Malheur	Aberdeen
Yield Total (cwt):	395	341	355	474	309
Yield No. 1's:	243	240	237	358	227
+ 10 (12 hm) oz. (cwt):	0	56	33	39	49
4-10 (12 hm) oz. (cwt):	243	185	204	319	
Yield Under 4 oz (cwt):	135	8	65	90	121
Yield Culls (cwt):	17	92	53	0	
Average Tuber Size (oz):	3.9	5.8			
Length/Width Ratio:	1.51				
Specific Gravity:	1.071	1.089	1.086		1.086
Hollow Heart (%):	0	2	8		0
Brown Center (%):	0				
Black Spot (%):	0				
IBS (%):	0		6		
Vascular Discoloration (%):	0	7	0		
Stem End Discoloration (%)		7	0		
Russetting (1-5):	1.9		4.5		
Shape Uniformity (1-5):	4.5		3.2		
Eye Depth (1-5):	4.8		2.7		
Greening (1-5):		5.0	5.0		
Growth Cracks (1-5):	5.0	5.0	4.8		4.8
Scab (1-5):	5.0				4.8
Shatter Bruise (1-5):	4.3		5.0		
Knobs (1-5)		3.8	5.0		4.8

Remarks:

Hermiston: fleshint=2.8, vis1=2, vis2=4

Corvallis:

K. Falls: pty x 3, pear x 3, keeper x 2

Malheur: d3,k,dk purple 4, died early, irreg 2, big, ugly, Alligator 2, dumbell, pear, chain

Aberdeen: Merit Score=3.3

P. Butte: russeted, drop?

Footnotes: Hermiston fleshint=flesh color intensity (1 to 5=most intense), vis1=external eye appeal by Dan (1 to 5=best), vis2=external and internal eye appeal by grading crew (1 to 5=best); Aberdeen Merit Score (1 to 5=exceptionally good), cooking score (1 to 9=best), antioxidant score (higher best)



Year: 2006
 Female Parent: PA97B35-1
 Male Parent: PA99P11-2

Flower (1=white, 3=purple, 5=blue) 3.5
 Vine Size (1=small to 5=large): 3
 Maturity (1=early to 5=late): 3.5

Skin Color: Red with white swirl
 Flesh Color: Red with white vascular
 Tuber Shape: Round to oblong

	Hermiston	Corvallis	K Falls	Malheur	Aberdeen
Yield Total (cwt):	385	303	282	467	225
Yield No. 1's:	159	173	68	186	84
+ 10 (12 hm) oz. (cwt):	0	1	0	2	1
4-10 (12 hm) oz. (cwt):	159	172	68	183	
Yield Under 4 oz (cwt):	217	18	136	199	203
Yield Culls (cwt):	9	113	78	7	
Average Tuber Size (oz):	3.0	3.7			
Length/Width Ratio:	1.29				
Specific Gravity:	1.053	1.067	1.064		1.065
Hollow Heart (%):	0	0	4		0
Brown Center (%):	0				
Black Spot (%):	0				
IBS (%):	0		4		
Vascular Discoloration (%):	0	11	0		
Stem End Discoloration (%)		0	0		
Russetting (1-5):	1.2		3.1		
Shape Uniformity (1-5):	4.3		2.4		
Eye Depth (1-5):	4.8		2.6		
Greening (1-5):		4.0	4.6		
Growth Cracks (1-5):	5.0	5.0	5.0		4.8
Scab (1-5):	4.9				4.5
Shatter Bruise (1-5):	4.9		5.0		
Knobs (1-5)		4.0	4.3		5.0

Remarks:

Hermiston: fleshint=3, vis1=4.5, vis2=4.5

Corvallis:

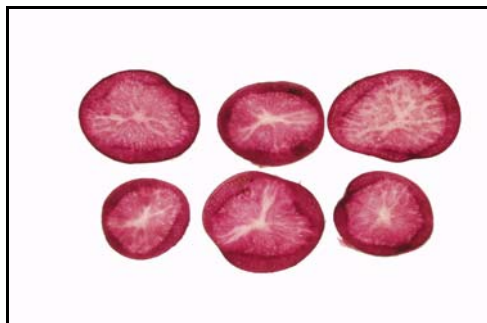
K. Falls: pty x 5, off-shape

Malheur: k4, maroon on yellow 3, yellow with purple stripes, uniform 2, small

Aberdeen: Merit Score=3

P. Butte: yellow goes into the tuber, J. Whitworth likes

Footnotes: Hermiston fleshint=flesh color intensity (1 to 5=most intense), vis1=external eye appeal by Dan (1 to 5=best), vis2=external and internal eye appeal by grading crew (1 to 5=best); Aberdeen Merit Score (1 to 5=exceptionally good), cooking score (1 to 9=best), antioxidant score (higher best)



Year: 2006
 Female Parent: PA97B35-1
 Male Parent: PA99P7-2

Flower (1=white, 3=purple, 5=blue) 3
 Vine Size (1=small to 5=large): 2.5
 Maturity (1=early to 5=late): 3.5

Skin Color: Light purple
 Flesh Color: Deep magenta
 Tuber Shape: Long, fingerling type

	Hermiston	Corvallis	K Falls	Malheur	Aberdeen
Yield Total (cwt):	221	257	301	494	154
Yield No. 1's:	62	26	78	156	11
+ 10 (12 hm) oz. (cwt):	0	0	0	10	0
4-10 (12 hm) oz. (cwt):	62	26	78	146	
Yield Under 4 oz (cwt):	154	86	158	310	153
Yield Culls (cwt):	5	145	65	3	
Average Tuber Size (oz):	3.0	2.8			
Length/Width Ratio:	2.41				
Specific Gravity:	1.055	1.074	1.065		1.067
Hollow Heart (%):	0	0	0		0
Brown Center (%):	0				
Black Spot (%):	0				
IBS (%):	0		4		
Vascular Discoloration (%):	0	48	0		
Stem End Discoloration (%)		0	0		
Russetting (1-5):	1.0		4.1		
Shape Uniformity (1-5):	5.0		2.7		
Eye Depth (1-5):	4.0		2.5		
Greening (1-5):		5.0	5.0		
Growth Cracks (1-5):	5.0	5.0	4.9		5.0
Scab (1-5):	5.0				5.0
Shatter Bruise (1-5):	5.0		5.0		
Knobs (1-5)		4.0	5.0		5.0

Remarks:

Hermiston: SR, fleshint=4, vis1=1, vis2=4

Corvallis:

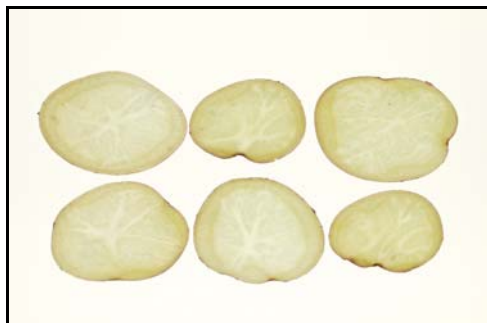
K. Falls: lumpy x 3

Malheur: d4, lavender, rose-purple 2, fingerling 2, Pointed End 4, dumbbell 2, curved

Aberdeen: Merit Score=2.5

P. Butte:

Footnotes: Hermiston fleshint=flesh color intensity (1 to 5=most intense), vis1=external eye appeal by Dan (1 to 5=best), vis2=external and internal eye appeal by grading crew (1 to 5=best); Aberdeen Merit Score (1 to 5=exceptionally good), cooking score (1 to 9=best), antioxidant score (higher best)



Year: 2006
 Female Parent: PA99P32-5
 Male Parent: POR00PG1-4

Flower (1=white, 3=purple, 5=blue) 3.8
 Vine Size (1=small to 5=large): 3
 Maturity (1=early to 5=late): 3.5

Skin Color: Pink
 Flesh Color: Light yellow
 Tuber Shape: Round

	Hermiston	Corvallis	K Falls	Malheur	Aberdeen
Yield Total (cwt):	548	398	406	583	325
Yield No. 1's:	433	293	296	501	210
+ 10 (12 hm) oz. (cwt):	66	47	44	109	48
4-10 (12 hm) oz. (cwt):	367	246	252	392	
Yield Under 4 oz (cwt):	88	12	84	79	179
Yield Culls (cwt):	27	93	26	0	
Average Tuber Size (oz):	5.4	4.8			
Length/Width Ratio:	1.12				
Specific Gravity:	1.064	1.079	1.076		1.064
Hollow Heart (%):	0	0	0		0
Brown Center (%):	0				
Black Spot (%):	0				
IBS (%):	0		6		
Vascular Discoloration (%):	0	3	0		
Stem End Discoloration (%):		0	0		
Russetting (1-5):	1.0		2.6		
Shape Uniformity (1-5):	5.0		2.9		
Eye Depth (1-5):	4.0		2.1		
Greening (1-5):		5.0	4.9		
Growth Cracks (1-5):	4.5	3.0	4.4		4.0
Scab (1-5):	4.5				5.0
Shatter Bruise (1-5):	5.0		5.0		
Knobs (1-5)		4.0	4.6		4.8

Remarks:

Hermiston: lots attached stems(4), fleshint=1, vis1=3, vis2=2.5

Corvallis:

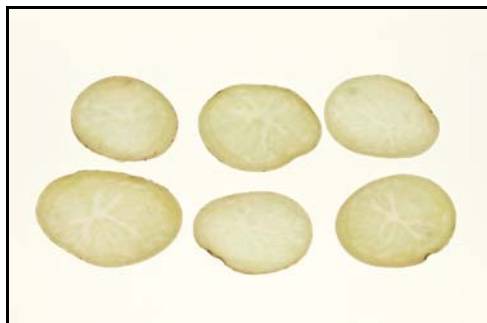
K. Falls: GC x 3, big

Malheur: d3,k, sickly yell-pink 2, pink w/ yell bars, fbe 3, holding soil, knobs, irreg, ugly

Aberdeen: Merit Score=3.5

P. Butte: drop

Footnotes: Hermiston fleshint=flesh color intensity (1 to 5=most intense), vis1=external eye appeal by Dan (1 to 5=best), vis2=external and internal eye appeal by grading crew (1 to 5=best); Aberdeen Merit Score (1 to 5=exceptionally good), cooking score (1 to 9=best), antioxidant score (higher best)



Year: 2006
 Female Parent: PA9935-1
 Male Parent: Winema

Flower (1=white, 3=purple, 5=blue) 4
 Vine Size (1=small to 5=large): 4.5
 Maturity (1=early to 5=late): 3

Skin Color: Yellow with red eyes
 Flesh Color: Yellow
 Tuber Shape: Oblong

	Hermiston	Corvallis	K Falls	Malheur	Aberdeen
Yield Total (cwt):	488	623	424	699	379
Yield No. 1's:	221	399	115	390	152
+ 10 (12 hm) oz. (cwt):	2	29	2	27	5
4-10 (12 hm) oz. (cwt):	219	370	113	364	
Yield Under 4 oz (cwt):	178	36	153	250	291
Yield Culls (cwt):	89	188	156	0	
Average Tuber Size (oz):	3.2	5.0			
Length/Width Ratio:	1.25				
Specific Gravity:	1.066	1.083	1.075		1.070
Hollow Heart (%):	0	0	0		0
Brown Center (%):	0				
Black Spot (%):	0				
IBS (%):	0		0		
Vascular Discoloration (%):	0	0	0		
Stem End Discoloration (%):		0	0		
Russetting (1-5):	1.1		2.0		
Shape Uniformity (1-5):	4.8		2.1		
Eye Depth (1-5):	4.5		2.8		
Greening (1-5):		3.0	4.9		
Growth Cracks (1-5):	5.0	5.0	3.9		5.0
Scab (1-5):	3.9				4.8
Shatter Bruise (1-5):	5.0		5.0		
Knobs (1-5)		4.0	4.9		4.5

Remarks:

Hermiston: smooth, pears, fleshint=1.5, vis1=2, vis2=1.6

Corvallis:

K. Falls: pty x 4, ugly

Malheur: d4, yellow with red eyes, yellow with pink eyes 3, chain 4, sprouts 2, dumbbell

Aberdeen: Merit Score=3.8

P. Butte:

Footnotes: Hermiston fleshint=flesh color intensity (1 to 5=most intense), vis1=external eye appeal by Dan (1 to 5=best), vis2=external and internal eye appeal by grading crew (1 to 5=best); Aberdeen Merit Score (1 to 5=exceptionally good), cooking score (1 to 9=best), antioxidant score (higher best)



Year: 2006
 Female Parent: PA99P7-2
 Male Parent: PA99P11-2

Flower (1=white, 3=purple, 5=blue) 3.8
 Vine Size (1=small to 5=large): 4
 Maturity (1=early to 5=late): 3.5

Skin Color: Purple
 Flesh Color: Purple
 Tuber Shape: Oblong

	Hermiston	Corvallis	K Falls	Malheur	Aberdeen
Yield Total (cwt):	507	294	350	571	252
Yield No. 1's:	413	133	208	526	186
+ 10 (12 hm) oz. (cwt):	207	50	37	327	74
4-10 (12 hm) oz. (cwt):	206	82	171	199	
Yield Under 4 oz (cwt):	35	14	50	25	60
Yield Culls (cwt):	59	147	92	1	
Average Tuber Size (oz):	7.3	5.0			
Length/Width Ratio:	1.71				
Specific Gravity:	1.064	1.072	1.066		1.059
Hollow Heart (%):	0	0	0		0
Brown Center (%):	0				
Black Spot (%):	0				
IBS (%):	0		0		
Vascular Discoloration (%):	0	0	0		
Stem End Discoloration (%):		0	0		
Russetting (1-5):	1.5		4.5		
Shape Uniformity (1-5):	5.0		2.7		
Eye Depth (1-5):	4.5		2.6		
Greening (1-5):		5.0	4.9		
Growth Cracks (1-5):	5.0	4.0	4.4		4.5
Scab (1-5):	5.0				5.0
Shatter Bruise (1-5):	4.5		5.0		
Knobs (1-5)		3.0	4.4		3.5

Remarks:

Hermiston: few knobs, SR, pears, fleshint=3.8, vis1=3.3, vis2=4.8

Corvallis:

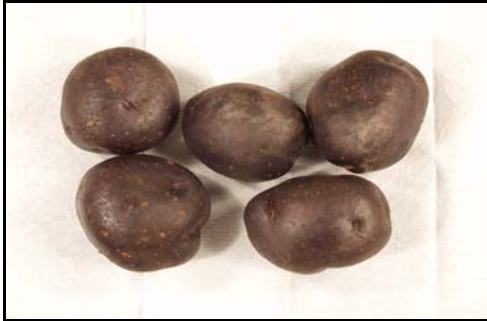
K. Falls: keep x 3, pty x 4

Malheur: d4, dark purple 4, rough 3, pear, irregular 4, Alligator Hide 2

Aberdeen: Merit Score=3.8

P. Butte: russeted, tubers set very high in hill, drop

Footnotes: Hermiston fleshint=flesh color intensity (1 to 5=most intense), vis1=external eye appeal by Dan (1 to 5=best), vis2=external and internal eye appeal by grading crew (1 to 5=best); Aberdeen Merit Score (1 to 5=exceptionally good), cooking score (1 to 9=best), antioxidant score (higher best)

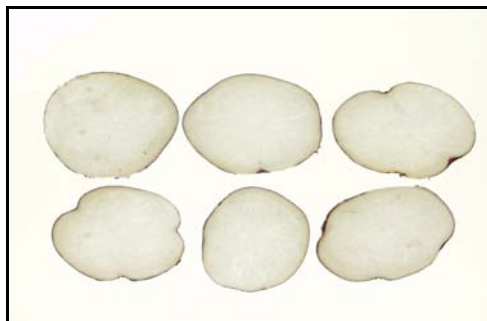


Year: 2006
 Female Parent: Red Pontiac
 Male Parent: PA99P35-1
 Skin Color: Purple
 Flesh Color: Purple mottle
 Tuber Shape: Oblong

Flower (1=white, 3=purple, 5=blue) 3.3
 Vine Size (1=small to 5=large): 3.5
 Maturity (1=early to 5=late): 2.5

	Hermiston	Corvallis	K Falls	Malheur	Aberdeen
Yield Total (cwt):	591	383	420	625	390
Yield No. 1's:	367	256	307	528	324
+ 10 (12 hm) oz. (cwt):	42	95	121	278	114
4-10 (12 hm) oz. (cwt):	326	161	186	250	
Yield Under 4 oz (cwt):	122	8	43	21	104
Yield Culls (cwt):	102	119	71	17	
Average Tuber Size (oz):	4.9	6.5			
Length/Width Ratio:	1.35				
Specific Gravity:	1.055	1.067	1.060		1.070
Hollow Heart (%):	0	0	0		0
Brown Center (%):	0				
Black Spot (%):	0				
IBS (%):	0		0		
Vascular Discoloration (%):	0	0	0		
Stem End Discoloration (%):		1	0		
Russetting (1-5):	1.6		4.4		
Shape Uniformity (1-5):	4.0		2.4		
Eye Depth (1-5):	4.8		2.5		
Greening (1-5):		5.0	5.0		
Growth Cracks (1-5):	5.0	4.0	5.0		5.0
Scab (1-5):	4.9				4.5
Shatter Bruise (1-5):	4.3		5.0		
Knobs (1-5)		3.0	4.9		4.8
Remarks:	Hermiston: pears(3), fleshint=2, vis1=2.3, vis2=4				
	Corvallis:				
	K. Falls: pty x 3, nice color x 3				
	Malheur: d3, k, purple 2, lavender-purple 2, irregular 2, rough 3, folded bud end 3,				
	Aberdeen: Merit Score=3.8				
	P. Butte: very large tubers				

Footnotes: Hermiston fleshint=flesh color intensity (1 to 5=most intense), vis1=external eye appeal by Dan (1 to 5=best), vis2=external and internal eye appeal by grading crew (1 to 5=best); Aberdeen Merit Score (1 to 5=exceptionally good), cooking score (1 to 9=best), antioxidant score (higher best)



Year: 2006
 Female Parent: Red Pontiac
 Male Parent: PA99P35-1

Flower (1=white, 3=purple, 5=blue) 4
 Vine Size (1=small to 5=large): 4
 Maturity (1=early to 5=late): 3.5

Skin Color: Purple
 Flesh Color: White
 Tuber Shape: Round

	Hermiston	Corvallis	K Falls	Malheur	Aberdeen
Yield Total (cwt):	489	432	425	643	277
Yield No. 1's:	306	299	312	571	207
+ 10 (12 hm) oz. (cwt):	24	145	105	137	111
4-10 (12 hm) oz. (cwt):	282	154	207	434	
Yield Under 4 oz (cwt):	177	6	51	68	35
Yield Culls (cwt):	6	127	62	0	
Average Tuber Size (oz):	3.8	7.3			
Length/Width Ratio:	0.96				
Specific Gravity:	1.069	1.076	1.081		1.066
Hollow Heart (%):	10	35	66		4
Brown Center (%):	0				
Black Spot (%):	0				
IBS (%):	0		2		
Vascular Discoloration (%):	3	0	0		
Stem End Discoloration (%)		0	0		
Russetting (1-5):	1.9		4.6		
Shape Uniformity (1-5):	5.0		2.6		
Eye Depth (1-5):	2.5		2.1		
Greening (1-5):		5.0	5.0		
Growth Cracks (1-5):	5.0	3.0	4.1		3.3
Scab (1-5):	5.0				4.8
Shatter Bruise (1-5):	4.8		5.0		
Knobs (1-5)		3.0	5.0		4.3

Remarks:

Hermiston: lots attached stems(2), fleshint=0, vis1=1, vis2=1.8

Corvallis:

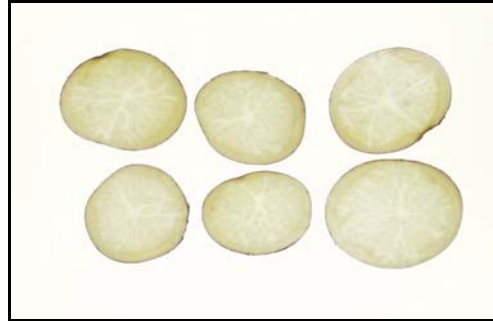
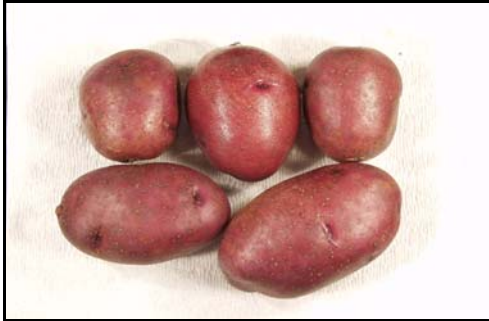
K. Falls: GC x 4, flat x 2, keep x 3

Malheur: d3, k, purple 4, rough 3, Alligator Hide 3, rounder than the All Blue

Aberdeen: Merit Score=2.8

P. Butte: deep eyes, lots of HH at cutting, drop

Footnotes: Hermiston fleshint=flesh color intensity (1 to 5=most intense), vis1=external eye appeal by Dan (1 to 5=best), vis2=external and internal eye appeal by grading crew (1 to 5=best); Aberdeen Merit Score (1 to 5=exceptionally good), cooking score (1 to 9=best), antioxidant score (higher best)



Year: 2006
 Female Parent: Satina
 Male Parent: PA99P35-1
 Skin Color: Medium purple
 Flesh Color: Yellow
 Tuber Shape: Long

Flower (1=white, 3=purple, 5=blue) 3.3
 Vine Size (1=small to 5=large): 2.5
 Maturity (1=early to 5=late): 2

	Hermiston	Corvallis	K Falls	Malheur	Aberdeen
Yield Total (cwt):	573	336	411	519	248
Yield No. 1's:	469	244	307	486	194
+ 10 (12 hm) oz. (cwt):	91	119	124	159	59
4-10 (12 hm) oz. (cwt):	379	125	183	327	
Yield Under 4 oz (cwt):	73	8	31	26	89
Yield Culls (cwt):	31	84	74	2	
Average Tuber Size (oz):	6.1	6.7			
Length/Width Ratio:	1.64				
Specific Gravity:	1.063	1.072	1.067		1.058
Hollow Heart (%):	0	0	0		0
Brown Center (%):	0				
Black Spot (%):	0				
IBS (%):	0		10		
Vascular Discoloration (%):	0	1	24		
Stem End Discoloration (%)		1	4		
Russetting (1-5):	1.5		4.3		
Shape Uniformity (1-5):	4.8		3.4		
Eye Depth (1-5):	4.0		2.5		
Greening (1-5):		5.0	5.0		
Growth Cracks (1-5):	5.0	4.0	4.6		5.0
Scab (1-5):	5.0				5.0
Shatter Bruise (1-5):	5.0		5.0		
Knobs (1-5)		3.0	5.0		5.0

Remarks:

Hermiston: fleshint=1, vis1=3, vis2=3.5

Corvallis:

K. Falls: keep x 3, pty x 3

Malheur: d3, k, lavender 3, purple, rough, irreg 3, curved, round to oblong, pear

Aberdeen: Merit Score=3.8

P. Butte: large tubers, lots of early die

Footnotes: Hermiston fleshint=flesh color intensity (1 to 5=most intense), vis1=external eye appeal by Dan (1 to 5=best), vis2=external and internal eye appeal by grading crew (1 to 5=best); Aberdeen Merit Score (1 to 5=exceptionally good), cooking score (1 to 9=best), antioxidant score (higher best)